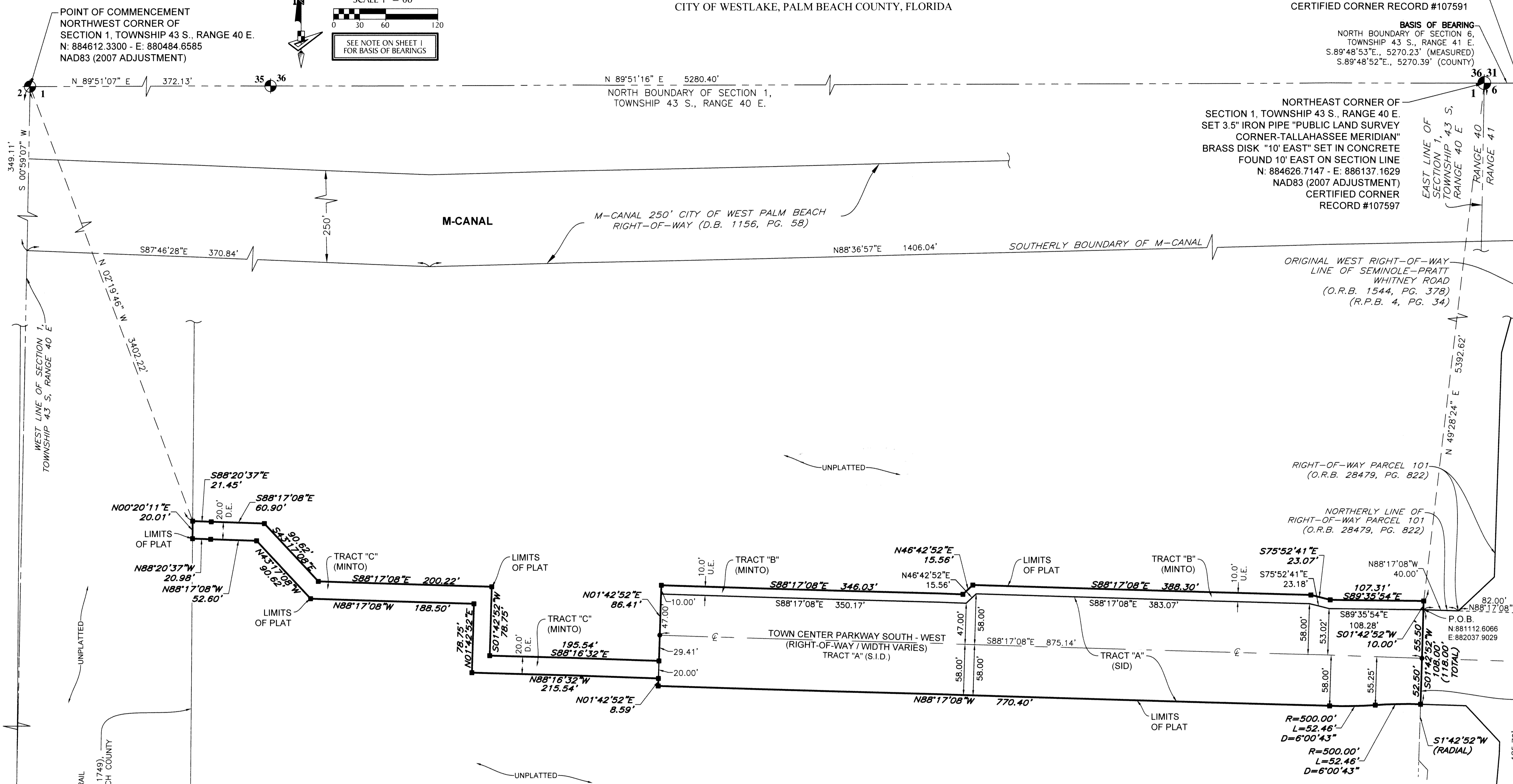


TOWN CENTER PARKWAY SOUTH - WEST

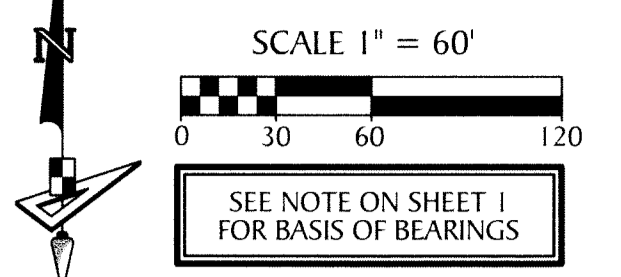
BEING A PORTION OF SECTION 1, TOWNSHIP 43 SOUTH, RANGE 40 EAST,
CITY OF WESTLAKE, PALM BEACH COUNTY, FLORIDA

NORTHEAST CORNER OF SECTION 6-43-41
FOUND BRASS DISK IN CONCRETE "P.B.C."
N: 884609.6818 E: 891407.3638
NAD83 (2007 ADJUSTMENT)
CERTIFIED CORNER RECORD #107591

58



POINT OF COMMENCEMENT
NORTHWEST CORNER OF
SECTION 1, TOWNSHIP 43 S., RANGE 40 E.
N: 884612.3300 - E: 880484.6585
NAD83 (2007 ADJUSTMENT)



BASIS OF BEARING
NORTH BOUNDARY OF SECTION 6,
TOWNSHIP 43 S., RANGE 41 E.;
S.89°48'53\"E., 5270.23' (MEASURED)
S.89°48'52\"E., 5270.39' (COUNTY)

M-2 CANAL
DECLARATION OF EASEMENT INDIAN TRAIL
WATER CONTROL DISTRICT
M-2 CANAL (OUTFALL) (O.R.B. 1687, PG. 1748)
AND PER PARTIAL ASSIGNMENT TO PALM BEACH COUNTY
(O.R. 22620, PG. 1890)

LEGEND	
P.O.B.	POINT OF BEGINNING
R.P.B.	ROAD PLAT BOOK
P.B.	PLAT BOOK
D.B.	DEED BOOK
O.R.	OFFICIAL RECORD BOOK
O.R.B.	OFFICIAL RECORD BOOK
PG./PG(S)	PAGE(S)
NAD83	NORTH AMERICAN DATUM OF 1983
P.B.C.	PALM BEACH COUNTY
U.E.	UTILITY EASEMENT
D.E.	DRAINAGE EASEMENT
CL	CENTER LINE
1-43-40	SECTION-TOWNSHIP-RANGE
R	RADIUS
L	ARC LENGTH
D	DELTA ANGLE
R/W	RIGHT-OF-WAY
S.I.D.	SEMINOLE IMPROVEMENT DISTRICT
PRM	PERMANENT REFERENCE MONUMENT
●	PERMANENT CONTROL POINT
□	FOUND PERMANENT REFERENCE MONUMENT
■	SET 4"x4" CONCRETE MONUMENT WITH 2" ALUMINUM DISK STAMPED "PRM LB 7768"

NORTHERLY MOST CORNER OF
ADDITIONAL RIGHT-OF-WAY OF
SEMINOLE-PRATT WHITNEY ROAD
(O.R.B. 10289, PG. 488)

WEST LINE OF ADDITIONAL
RIGHT-OF-WAY OF
SEMINOLE-PRATT WHITNEY ROAD
(O.R.B. 10289, PG. 488)

80' RURAL PARKWAY
EASEMENT
(O.R.B. 27898, PG. 1321)

GeoPoint
Surveying, Inc.

1152 W. Blue Heron
Suite 103
Riviera Beach, FL 33404

Phone: (561) 444-2720
www.geopointsurvey.com
Licensed Business Number LB 7768

Sheet No. 2 of 2 Sheets